



OFFERS IN EXCESS OF

**£700,000**

**Vaughan Road**

London, SE5 9NZ

**GARETH**  
**JAMES**



## PROPERTY SUMMARY

Tucked away off a picturesque residential street in the heart of Camberwell, Redwing Mews is a hidden gem. Behind secure gates lies a peaceful, beautifully maintained development of just nine mews houses, originally converted from a former coach house 21 years ago. Today, the mews enjoys a strong sense of community, with annual parties and social gatherings among the residents.

2



2



1

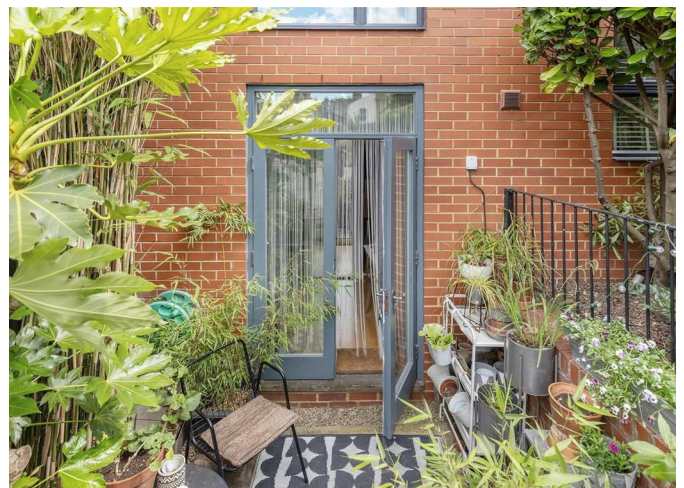
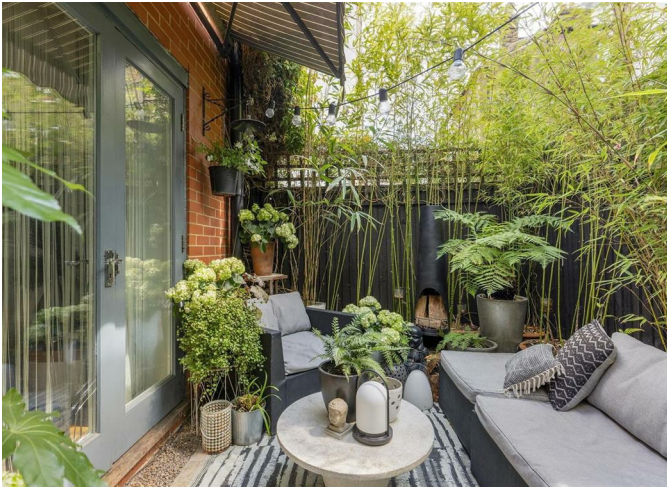








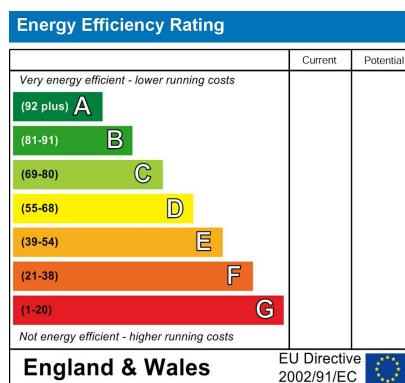








Illustration for identification purposes only. Not to scale.  
Floor Plan Drawn According To RICS Guidelines.



Agents Note: Whilst every care has been taken to prepare these particulars, they are for guidance purposes only. All measurements are approximate and are for general guidance purposes only and whilst every care has been taken to ensure their accuracy, they should not be relied upon and potential buyers/tenants are advised to recheck the measurements

**GARETH JAMES**

**OFFICE ADDRESS**  
129 Bellenden Road  
London  
SE15 4QY

**OFFICE DETAILS**  
02077324330  
sales@garethjames.com  
<https://www.garethjames.com/>